

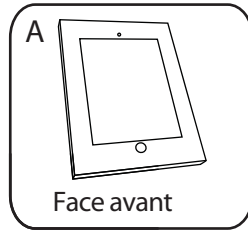
Support Ipad 360

Support Ipad permettant une inclinaison et une rotation à 360°.

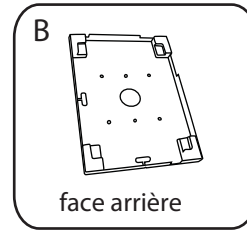
- peut être fixé sur un bureau, sur un mur ou sur un mât Linear.
- Fixations incluses
- Disponible en noir, blanc ou argenté.



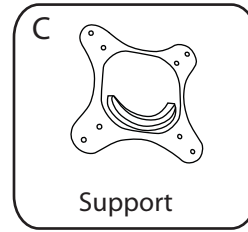
Poids 2,5 kg
Colisage : 160 (h) x 375 (l) x 235 (L) mm



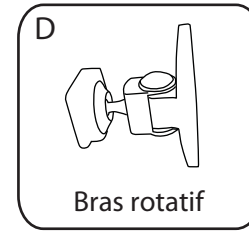
Face avant



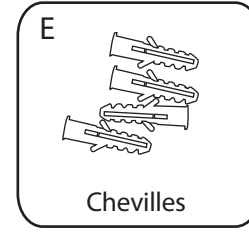
face arrière



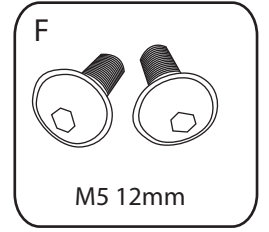
Support



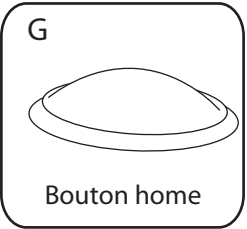
Bras rotatif



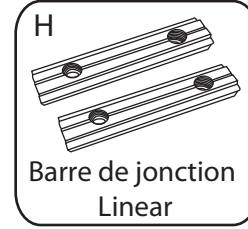
Chevilles



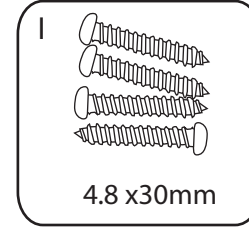
M5 12mm



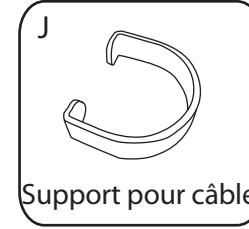
Bouton home



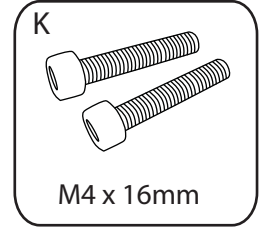
Barre de jonction
Linear



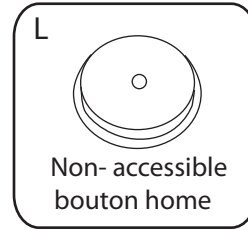
4.8 x30mm



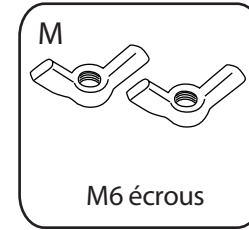
Support pour câble



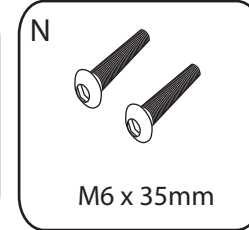
M4 x 16mm



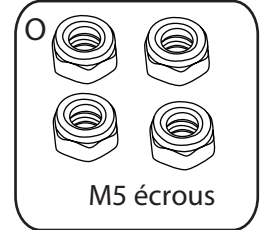
Non- accessible
bouton home



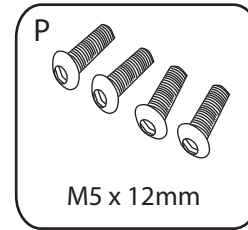
M6 écrous



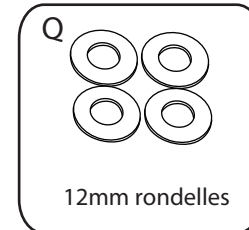
M6 x 35mm



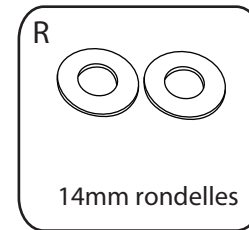
M5 écrous



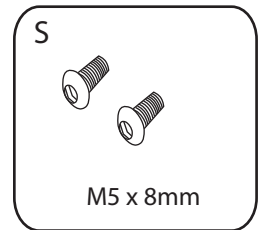
M5 x 12mm



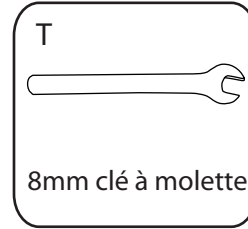
12mm rondelles



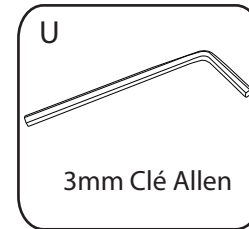
14mm rondelles



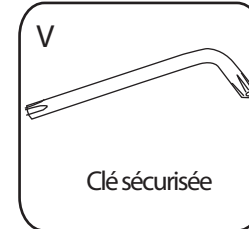
M5 x 8mm



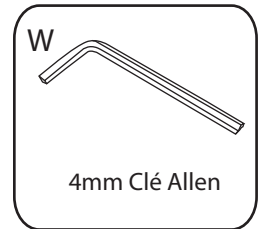
8mm clé à molette



3mm Clé Allen



Clé sécurisée

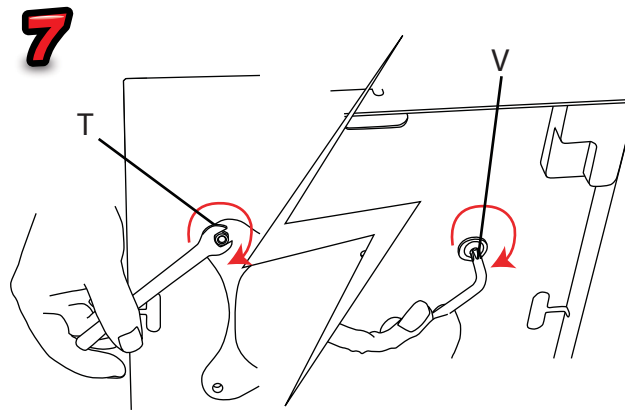
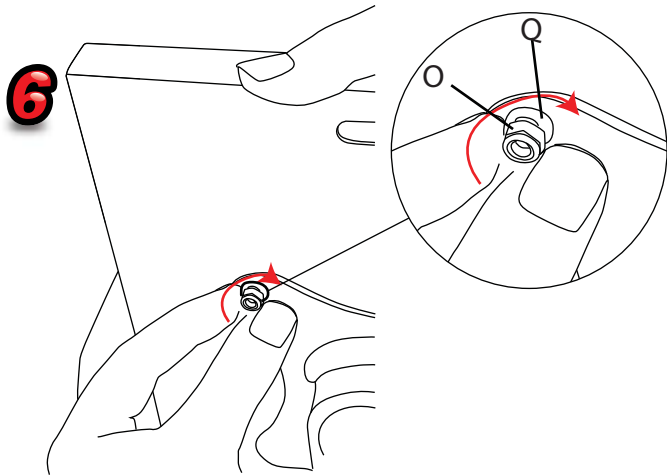
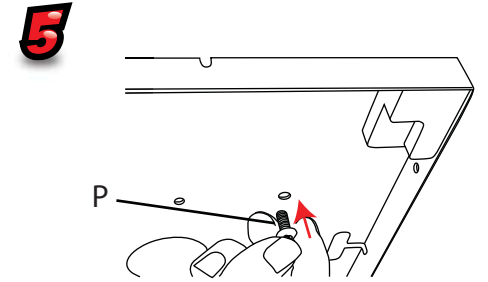
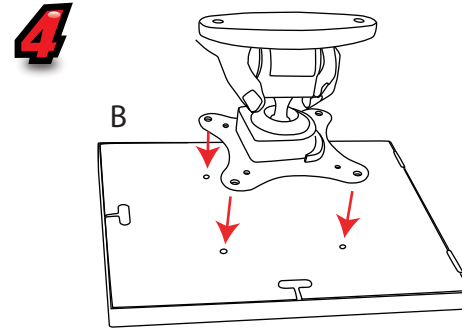
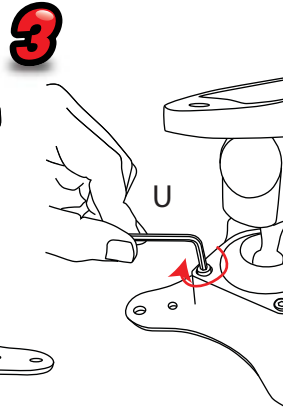
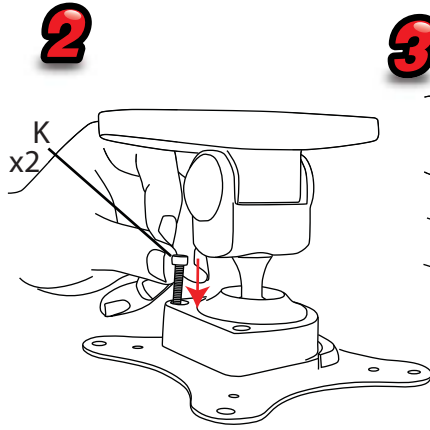
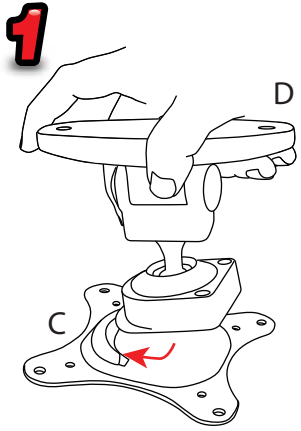


4mm Clé Allen

Support Ipad 360

Assemblage du bras rotatif :

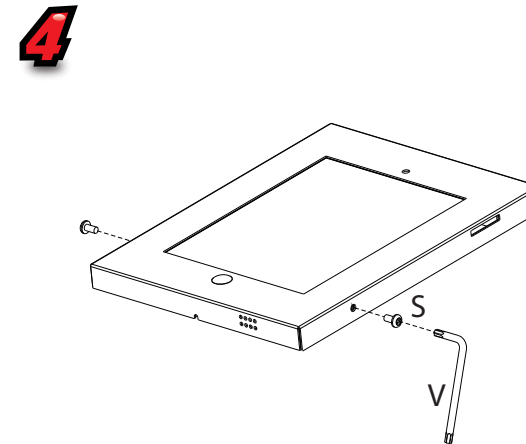
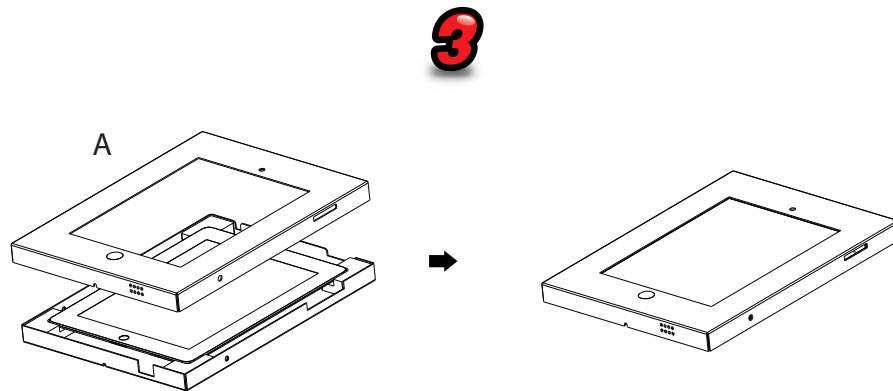
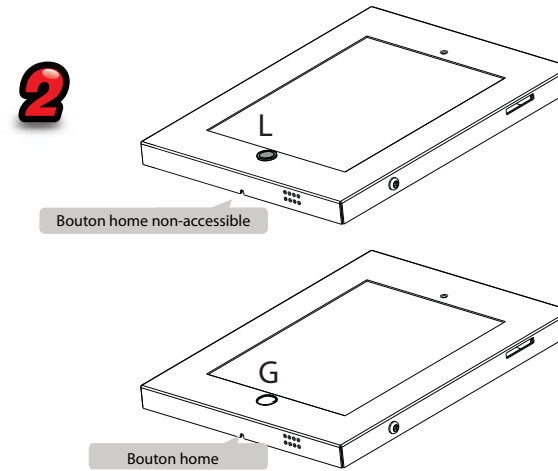
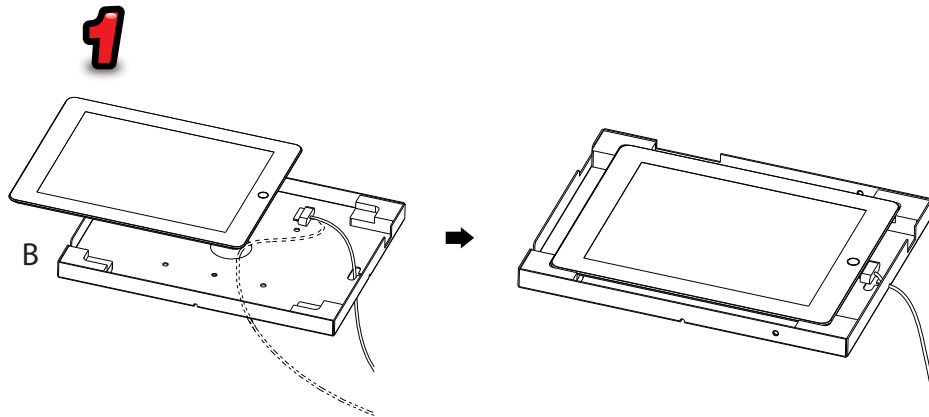
Éléments requis D,C,K,U,B,P,O,Q,T,V



Support Ipad 360

Assemblage du support.

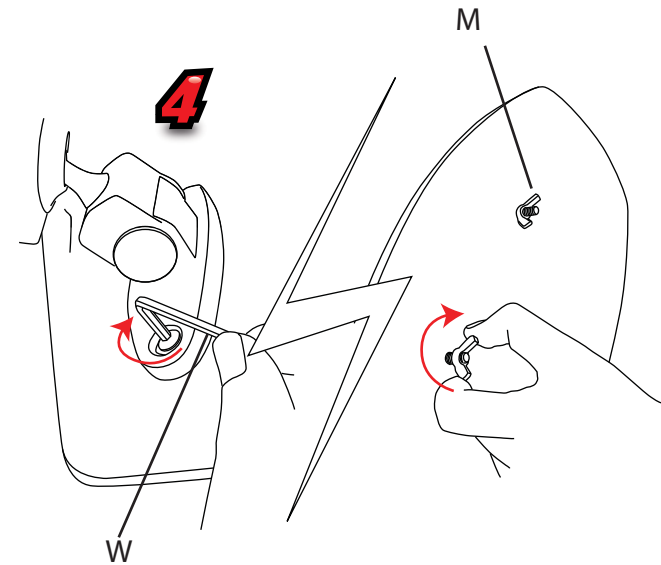
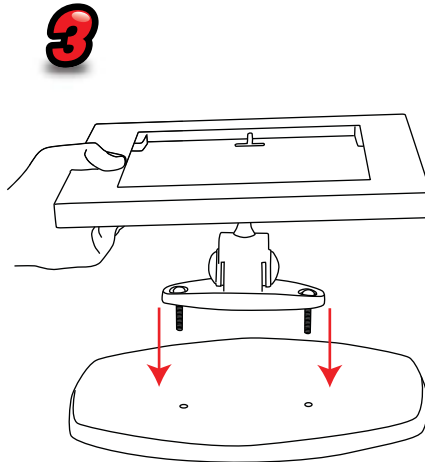
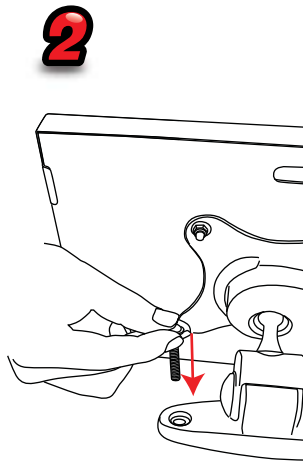
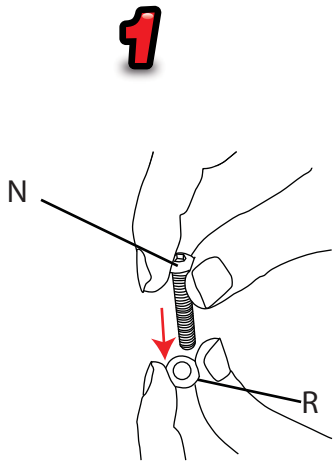
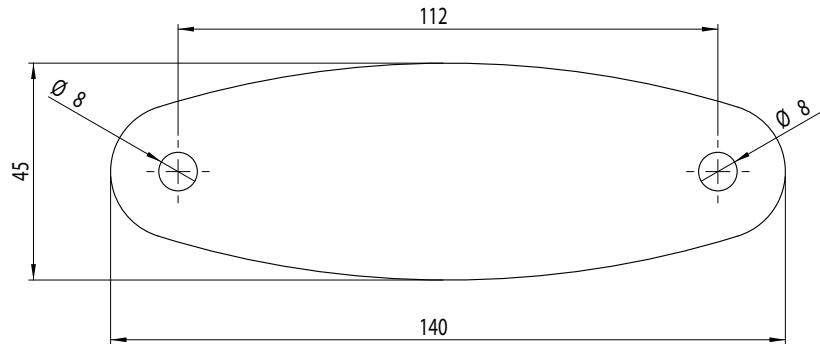
Éléments requis : B,L,G,A,S,V



Support Ipad 360

Montage du support pour bureau
Éléments requis : N,R,W,M

Dimensions des trous dans le support pour bureau

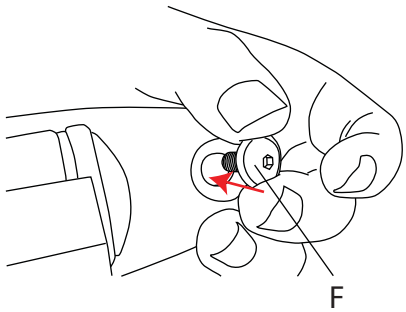


Support Ipad 360

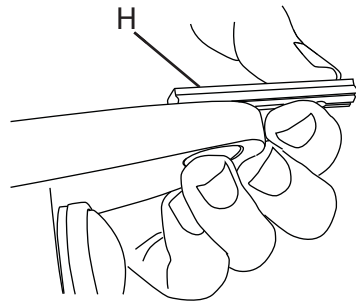
Assemblage support Ipad sur mât Linear

Éléments requis : F,H,U,B,

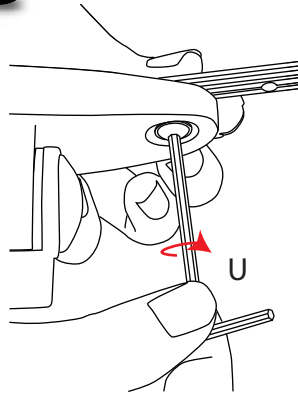
1



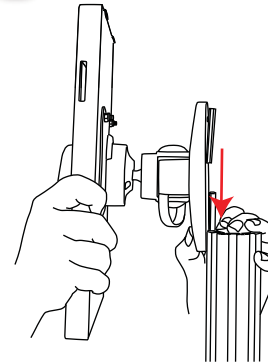
2



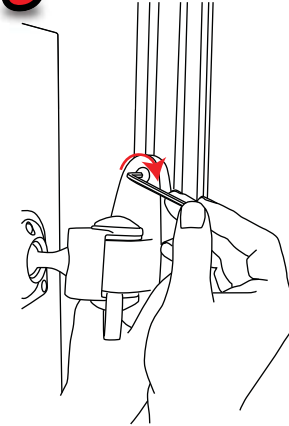
3



4



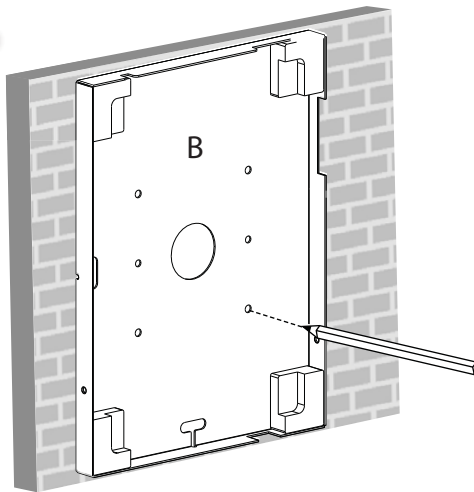
5



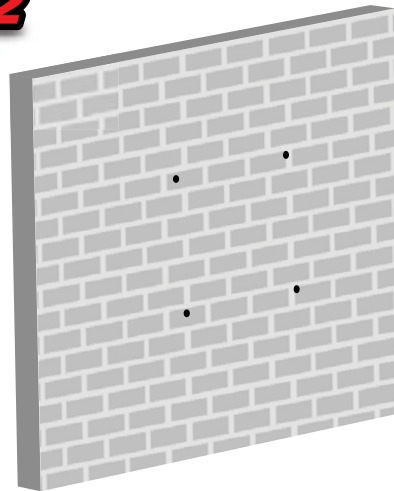
Assemblage pour fixation au mur.

Éléments requis : B,E,I

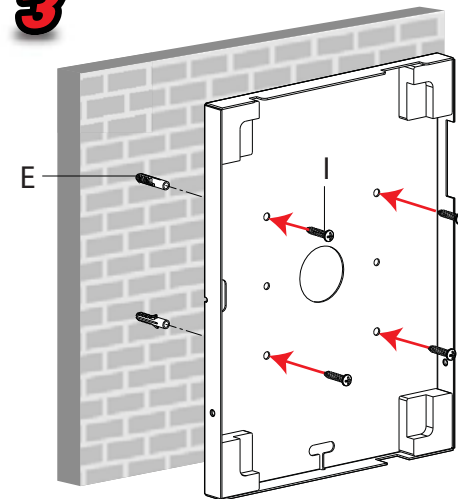
1



2



3



Support Ipad 360

Installation